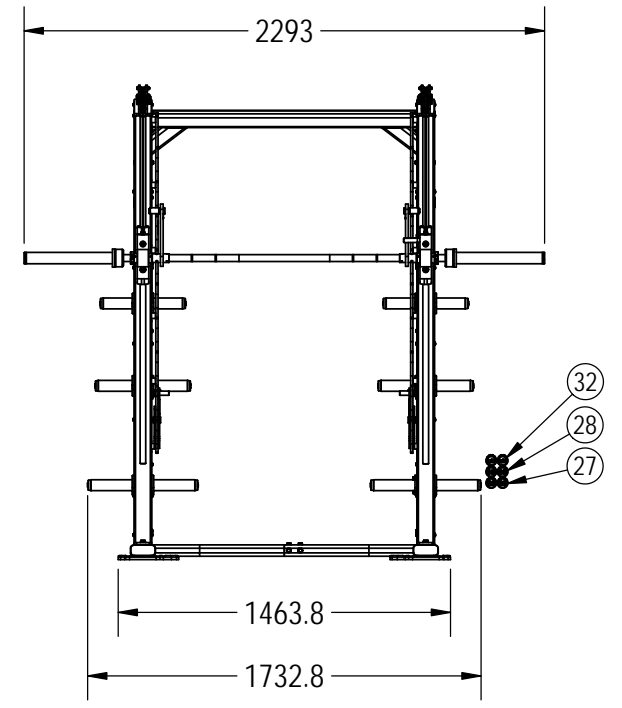
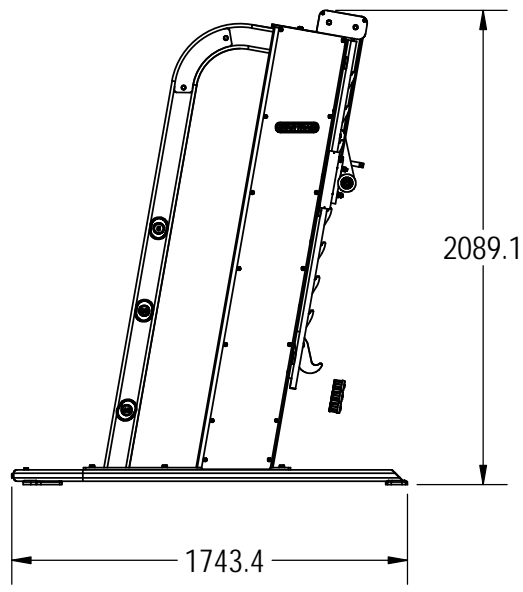
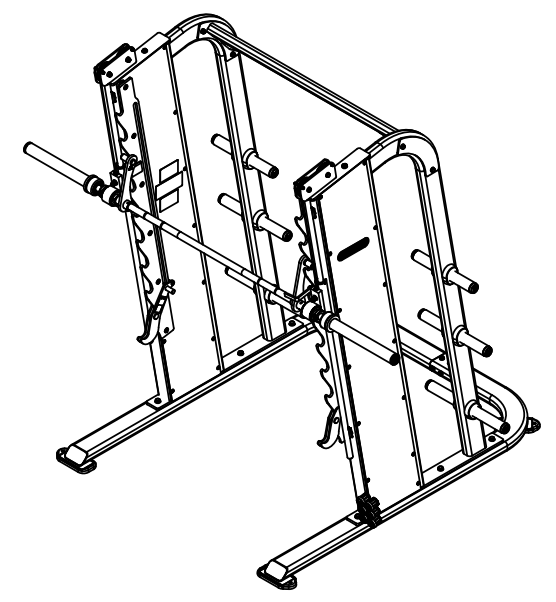
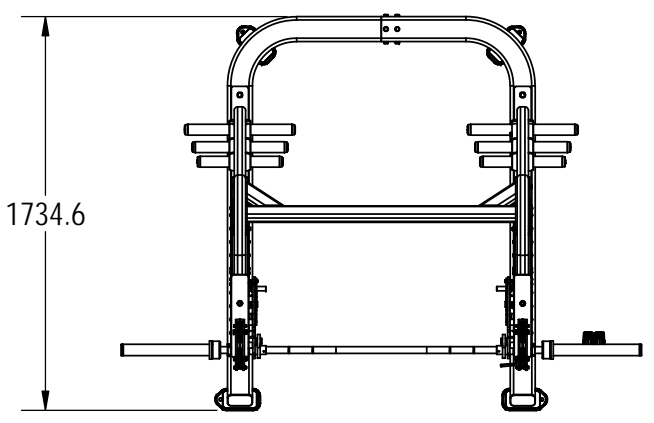


REVISION HISTORY				
REV	DATE	DESCRIPTION	ECO	BY
A	11/19/10	ORIGINAL RELEASE	13440	RLH
B	7/26/2012	DESIGN REVISED TO SHOW AS BUILT FROM LAND AMERICA	13801	KEY
C	11/30/2012	IMPLEMENT 1 PC WEIGHT HORN	13831	KEY
D	6/26/2014	UPDATE TO SHOW STICKER PLACEMENT, ADDED STICKER 731-5002 QTY: 2, 731-5003 QTY: 2.	14707	KY



NOTES:
1. ASSEMBLE AND INSPECT PER SOP 620-7918.

DOCUMENT STATUS:

NOTICE OF PROPRIETARY INFORMATION
THIS DOCUMENT SHALL NOT BE REPRODUCED NOR SHALL THE INFORMATION CONTAINED HEREIN BE USED BY OR DISCLOSED TO OTHER EXCEPT AS EXPRESSLY AUTHORIZED BY CORE HEALTH & FITNESS, LLC.

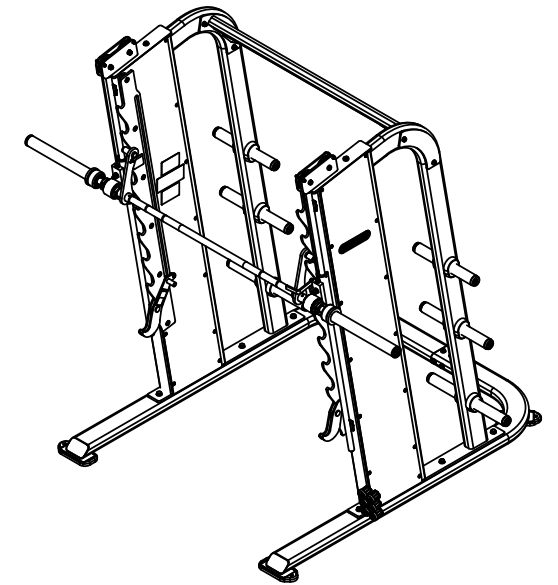
CLASS OF WORK	UNLESS OTHERWISE SPECIFIED DIMS ARE IN mm. TOLERANCES FOR MEASURE OF LENGTH ARE:								MATERIAL SEE BOM
	0.5 to 3	> 3 to 6	> 6 to 30	> 30 to 120	> 120 to 400	> 400 to 1000	> 1000 to 2000	> 2000	
FINE	±0.05	±0.05	±0.1	±0.15	±0.2	±0.3	±0.5	----	FINISH N/A
MEDIUM	±0.1	±0.1	±0.2	±0.3	±0.5	±0.8	±1.2	±2	
COARSE	±0.2	±0.3	±0.5	±0.8	±1.2	±2	±3	±4	
VERY COARSE	----	±0.5	±1	±1.5	±2.5	±4	±6	±8	

THIRD ANGLE PROJECTION		CORE PART NO	
		IP-L8500-XXXXS	
DRAWN	INITIAL KEY	DATE 7/30/12	REV D
CHECKED			
APPROVED			
VENDOR: N/A		P/N: IP-L8500-00	

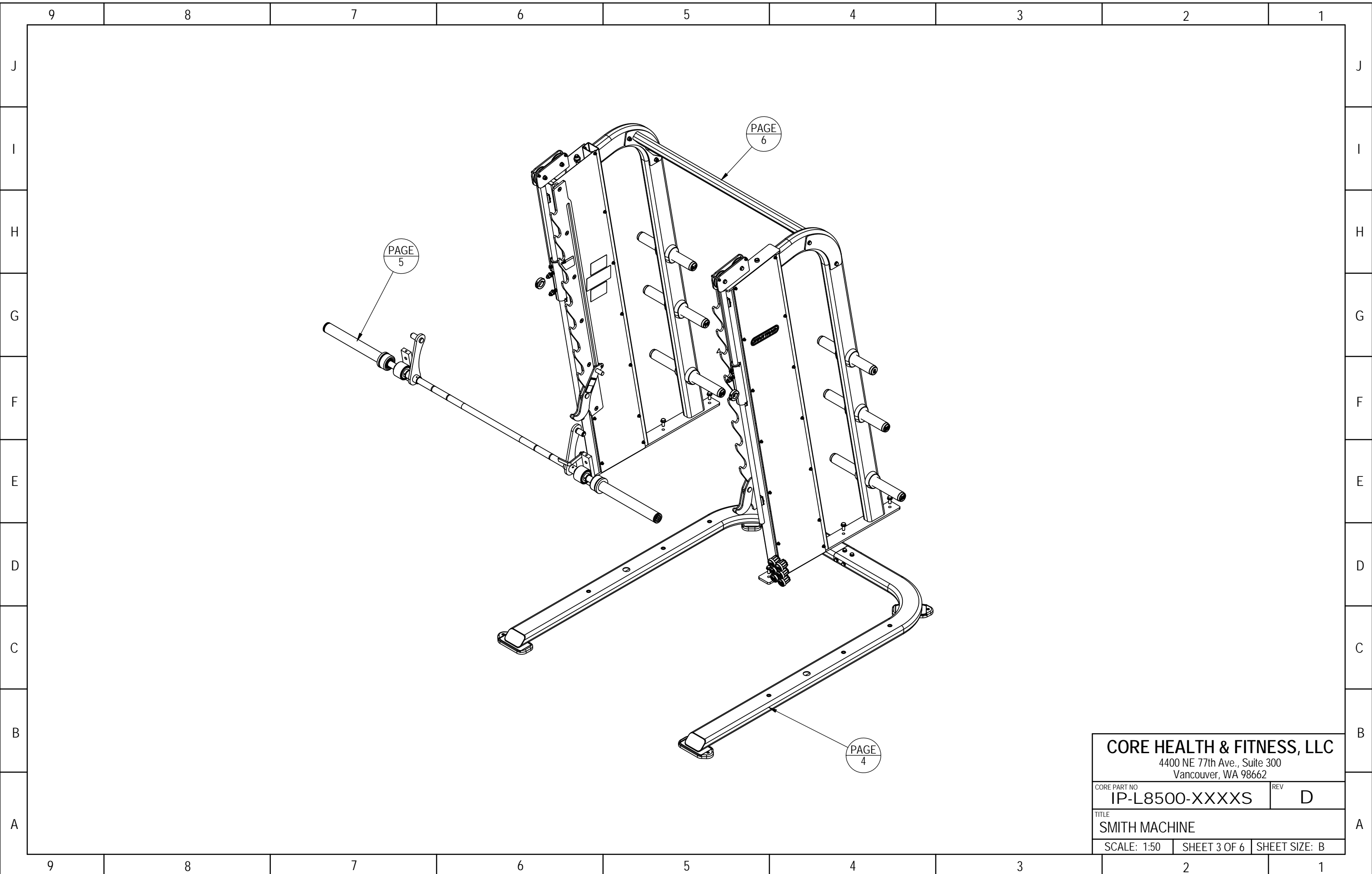
CORE HEALTH & FITNESS, LLC			
4400 NE 77th Ave., Suite 300 Vancouver, WA 98662			
SCALE: 1:33.3		SHEET 1 OF 6	
U.O.M. MM		SHEET SIZE: B	

Grid coordinates: 9, 8, 7, 6, 5, 4, 3, 2, 1 (horizontal); J, I, H, G, F, E, D, C, B, A (vertical)

9		8		7		6		5		4		3		2		1	
	ITEM NO.	PART NUMBER	DESCRIPTION	Default/ QTY.		ITEM NO.	PART NUMBER	DESCRIPTION	Default/ QTY.								
J	1	130-1778	COLLAR, 30MM ID	2		46	731-5480	M12X1.5-C HEX NUT	2								J
	2	731-0355	WASHER,PLAIN,M8,NARROW	7		47	731-5484	ROD,GUIDE,16MM,1970MM	2								
	3	731-0363	NUT,M10X1.5,NYLOC	8		48	731-5485	ROD,GUIDE,25mm x 1524, THRD	2								
	4	731-0365	NUT,M8 X 1.25,NYLOC JAM	12		49	731-5486	SLEEVE,INSERT,BUSHING,SMITH	4								
	5	731-0512	STICKER,WARNING,PINCH	2		50	731-5487	WASHER,M10,BZ	2								
I	6	731-0513	STICKER,STAR TRAC,DECO,45MMX191MM	2		51	731-5491	M10x45 HHCS	2								I
	7	731-1373	BUMPER,STOP,WGT	1		52	731-5492	6.6mm ID WASHER	10								
	8	731-1933	RIVET, PUSH TYPE	56		53	731-5493	M6 HEX NUT	6								
	9	731-2428	STICKER,WARNING,SAFETY STOP,SMITH	1		54	731-5494	M6x30-N,HHBC	2								
H	10	731-2429	STICKER,WARNING,SAFETY STOP,SMITH	2		55	731-5497	NUT,M12,CS,BZ	2								H
	11	731-2430	STICKER,WARNING,STANDARD INSTRUCTIONS	2		56	731-5498	WASHER,PLAIN,M12,BZ	8								
	12	731-2434	BEARING, ROLLER 25MM, OPEN	4		57	731-5499	AXLE BOLT, M12x1.25	2								
	13	731-2498	PIN,SPRING,M3 X 8mm	4		58	731-5501	ASSY,TUBE,GUIDE,BEARING,SMITH	2								
	14	731-2501	CABLE,SMITH MACHINE	2		59	731-5514	M12x30, HHM,HE,CS,ZP	6								
G	15	731-2503	PULLEY,SMITH MACHINE	4		60	731-5515	M10-30, HHC,HK,CS,ZP	12								G
	16	731-2647	FOOT,LONG,LEVERAGE	4		61	731-5516	M10x75,HHM,CS,ZP	6								
	17	731-5002	STICKER,WARNING,USE SPOTTER	2		62	731-5517	M8x8,HHS	2								
	18	731-5003	STICKER,WARNING,PROPER PLACE	2		63	731-5518	M6x45, HHC,HK,CS,BO	4								
F	19	731-5246	WELD, WGT HOLDER, 10LB	2		64	731-5519	M10x45, HHM,CS,ZP	4								F
	20	731-5248	WELD, WGT HOLDER, 25LB	2		65	731-5520	WASHER,SMWC 8	17								
	21	731-5250	WELD, WGT HOLDER, 45LB	2		66	731-5521	M8x75,HHC,CS,N	10								
	22	731-5251	PLATE, MOUNT, WGT HOLDER	6		67	731-5523	PLATE,STOP,ADJ,LH,SMITH	1								
	23	731-5259	BUMPER,STOP,WGT	12		68	731-5524	PLATE,STOP,ADJ,RH,SMITH	1								
E	24	731-5260	CAP,PLUG,WEIGHT HORN,45	2		69	731-5525	WELD,SAFETY CATCH,LH,SMITH	1								E
	25	731-5261	CAP,PLUG,WEIGHT HORN,35	2		70	731-5526	WELD,SAFETY CATCH,RH,SMITH	1								
	26	731-5262	CAP,PLUG,WEIGHT HORN,25	2		71	731-5531	WELD,CB,SMITH	2								
	27	731-5263	CAP,PLUG,WEIGHT HORN,20	2		72	731-5541	COVER,OUTER,SMITH	2								
	28	731-5264	CAP,PLUG,WEIGHT HORN,15	2		73	731-5542	STOP,OLY BAR,SMITH	1								
D	29	731-5265	CAP,PLUG,WEIGHT HORN,10	2		74	731-5543	ASSY,MOUNT,OLY BAR,SMITH	2								D
	30	731-5266	CAP,PLUG,WEIGHT HORN,5	2		75	731-5560	ASSY,OLY BAR,SMITH	1								
	31	731-5267	CAP,PLUG,WEIGHT HORN,2.5	2		76	731-5562	WASHER,SMWC 10	1								
	32	731-5268	CAP,PLUG,WEIGHT HORN,1.25	2		77	731-5563	SCREW,M12-1.75,25MM,HHC,HE,CS	2								
C	33	731-5451-XX	WELD,SIDE,LH,SMITH	1		78	731-5565	BOLT,M10x80,HHC,CS	4								C
	34	731-5460-XX	WELD,SIDE,RH,SMITH	1		79	731-5568	BUSHING,IGUS,CW	4								
	35	731-5462-XX	WELD,BASE,LH,SMITH	1													
	36	731-5466-XX	WELD BASE,RH,SMITH	1													
	37	731-5468	COVER,INNER, SMITH	2													
B	38	731-5469	STAND-OFF,ROD,SMITH	6													B
	39	731-5470	COLLAR,SET,16mm	2													
	40	731-5472	BUSHING,WEAR,HANDLE,SMITH	2													
	41	731-5473-XX	WELDMENT,CROSS-BAR,SMITH	1													
A	42	731-5475	PLATE,CROSSBAR,SMITH	2													A
	43	731-5477	WASHER,M10	28													
	44	731-5478	HHBC,M10x45	7													
	45	731-5479	M10, THIN NUT	4													



CORE HEALTH & FITNESS, LLC	
4400 NE 77th Ave., Suite 300 Vancouver, WA 98662	
CORE PART NO	REV
IP-L8500-XXXXS	D
TITLE	
SMITH MACHINE	
SCALE: 1:33.3	SHEET 2 OF 6
SHEET SIZE: B	

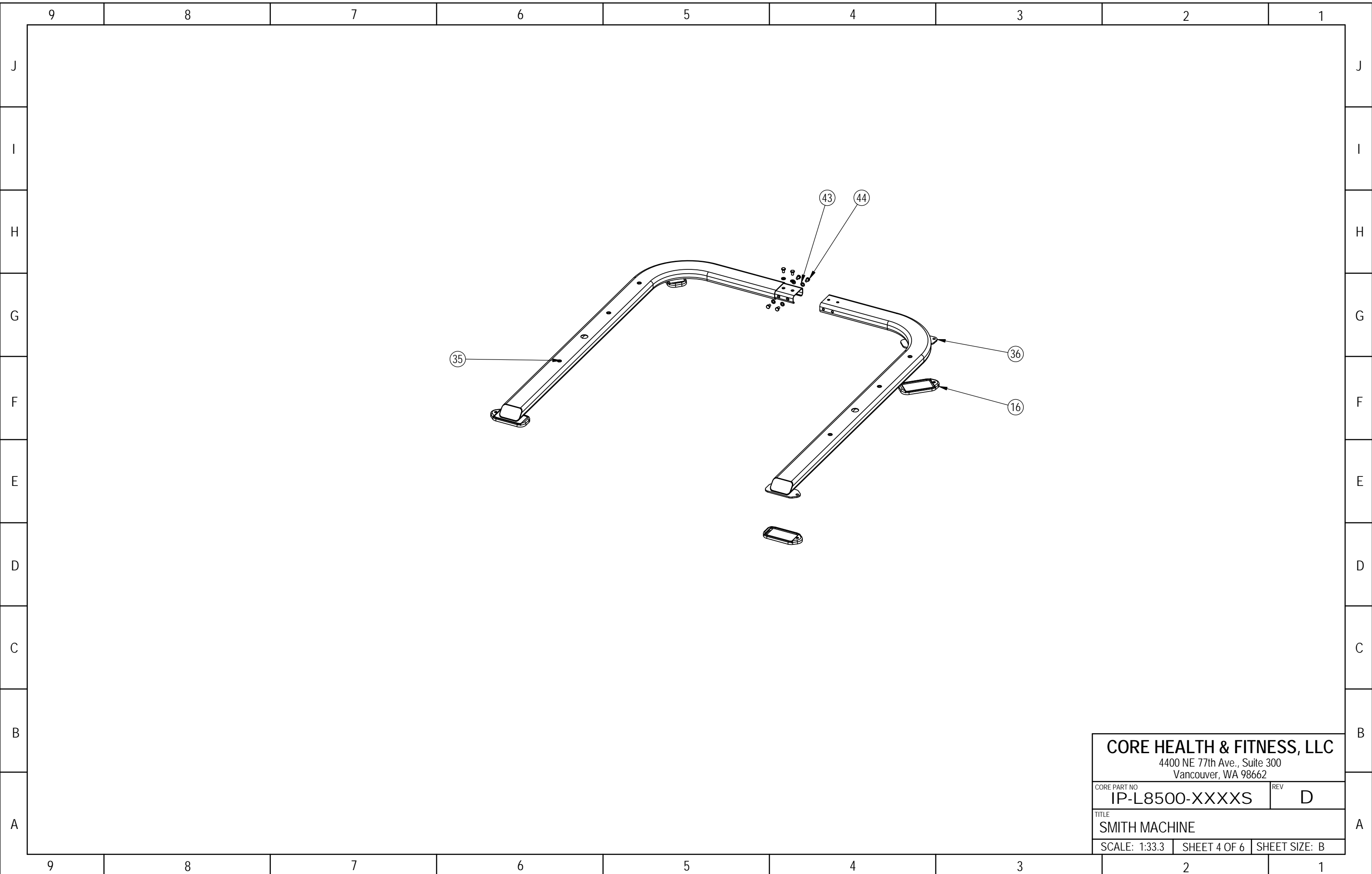


CORE HEALTH & FITNESS, LLC
4400 NE 77th Ave., Suite 300
Vancouver, WA 98662

CORE PART NO	REV
IP-L8500-XXXXS	D

TITLE
SMITH MACHINE

SCALE: 1:50	SHEET 3 OF 6	SHEET SIZE: B
-------------	--------------	---------------

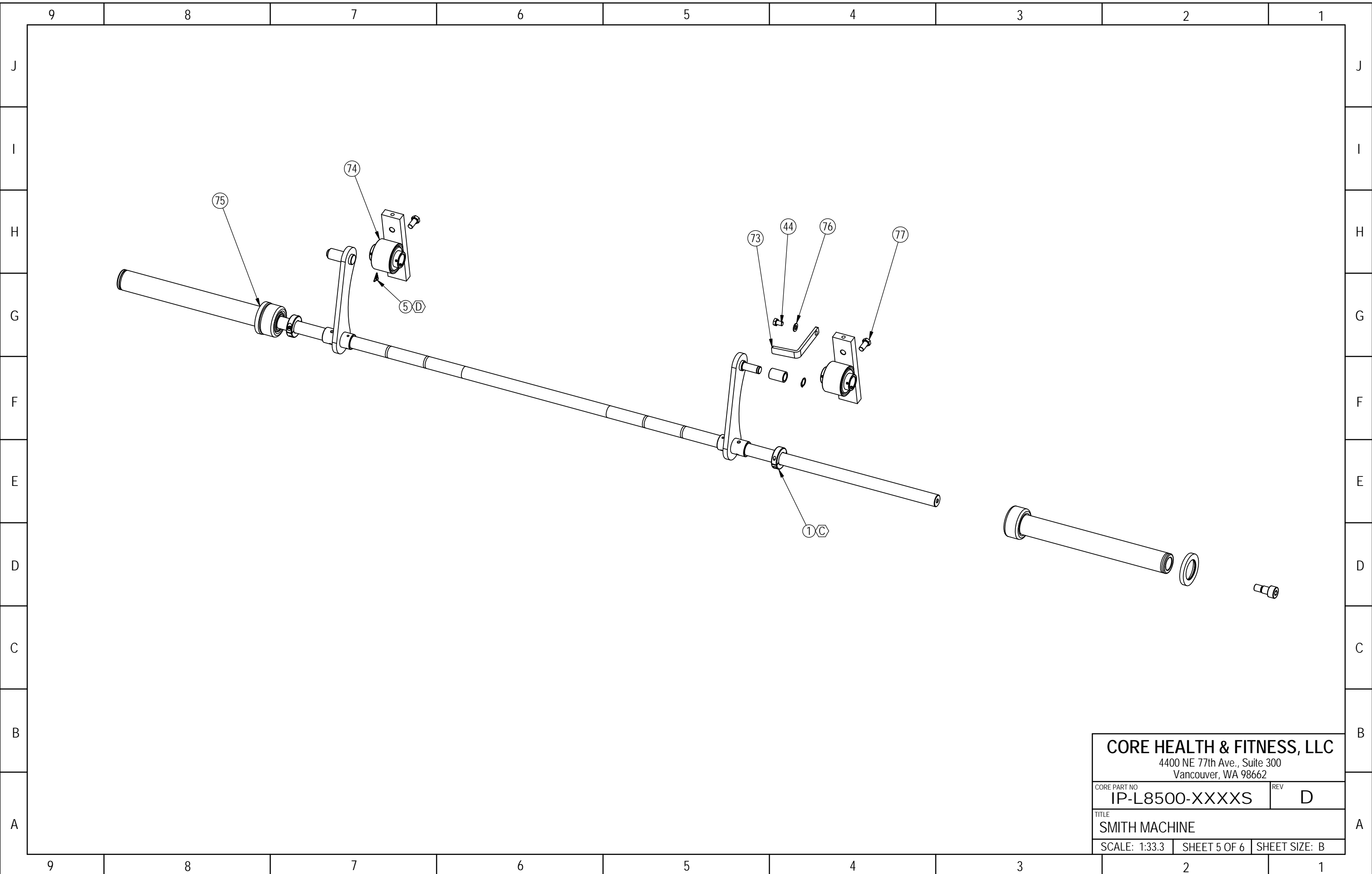


CORE HEALTH & FITNESS, LLC
 4400 NE 77th Ave., Suite 300
 Vancouver, WA 98662

CORE PART NO	REV
IP-L8500-XXXXS	D

TITLE
SMITH MACHINE

SCALE: 1:33.3	SHEET 4 OF 6	SHEET SIZE: B
---------------	--------------	---------------

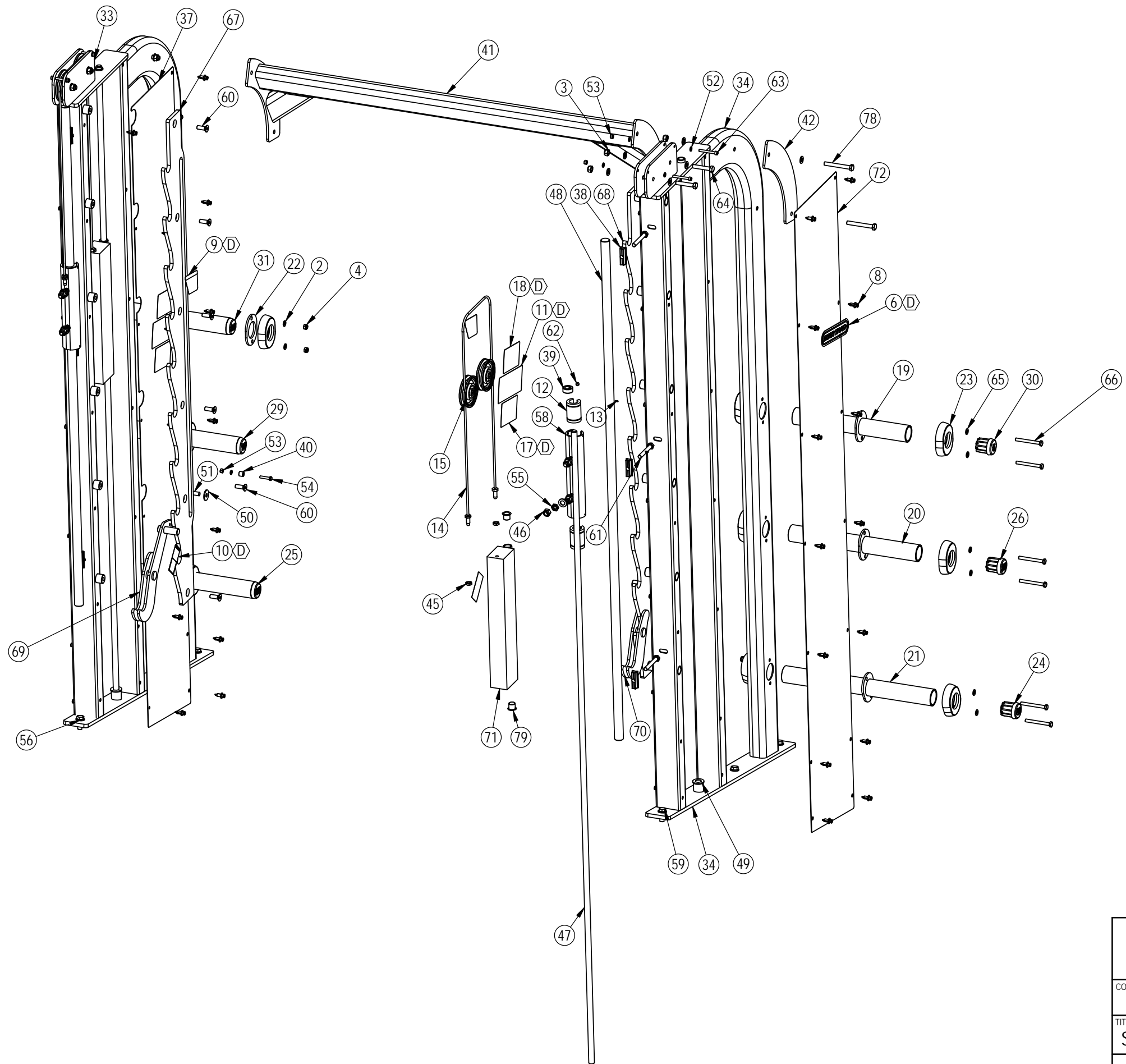


CORE HEALTH & FITNESS, LLC
 4400 NE 77th Ave., Suite 300
 Vancouver, WA 98662

CORE PART NO	REV
IP-L8500-XXXXS	D

TITLE
SMITH MACHINE

SCALE: 1:33.3	SHEET 5 OF 6	SHEET SIZE: B
---------------	--------------	---------------



CORE HEALTH & FITNESS, LLC		
4400 NE 77th Ave., Suite 300 Vancouver, WA 98662		
CORE PART NO	REV	
IP-L8500-XXXXS	D	
TITLE		
SMITH MACHINE		
SCALE: 1:50	SHEET 6 OF 6	SHEET SIZE: B